

2008 Middle Tennessee Softball



MT Media Relations - MTSU BOX 20 - Murfreesboro, TN 37132 - Phone (615) 904-8115 - Fax (615) 898-5626 - GoBlueRaiders.com



JACKSONVILLE STATE GAMECOCKS: The Gamecocks enter Tuesday's doubleheader coming off a series victory over Ohio Valley Conference foe Morehead State. Middle Tennessee and Jacksonville State are meeting for the seventh time in school history, with JSU holding a 5-1 advantage. The last meeting between the teams occurred on March 14, 2007, when Jacksonville State defeated Middle Tennessee 7-5 in eight innings at Blue Raider Field in Murfreesboro, Tenn. The Golden Panthers hold a 25-11 record including a impressive 14-3 mark in conference play. The Blue Raiders were scheduled to play the Gamecocks at the Buzz Classic in Woodstock, Ga. on March 9th, but the tournament was cancelled due to inclement weather.



UT MARTIN SKYHAWKS: The Skyhawks enter Wednesday's doubleheader having been swept in Ohio Valley Conference play by Eastern Kentucky. Middle Tennessee and Florida International are meeting for the 33rd time in school history, with the MT holding a 22-9-1 advantage including the only tie in Blue Raider program history. The last meeting between the teams occurred earlier this year, when the Skyhawks defeated Middle Tennessee 4-2 at the Middle Tennessee Classic on February 24, 2008. UT Martin holds a 16-23 record including a 4-8 mark in conference play.

ABEL'S AWARD: Sophomore outfielder Corrie Abel was named the Sun Belt Conference Player of the Week on April 7, 2008, after leading the Blue Raiders to a series victory against conference-foe North Texas. Abel batted .364, including two game-winning hits, in three games against the Mean Green. She led the team in homeruns (1), RBI (5), totals bases (7) and slugging percentage (.636) in the series. The Shorewood, Ill. native went 2-for-5 as the Blue Raiders won 8-4 in the first game of the series, driving in what proved to be the game-winning runs in the 6th inning with her first career grand-slam homerun. She went 1-for-2 with a run scored and walk in the second game before finishing off a Middle Tennessee 7th inning rally with the game-winning a RBI single to right field in the deciding game of the series. The Joliet West HS product leads the team on the season in batting average (.366), hits (45), runs scored (24), total bases (63), slugging percentage (.512), on-base percentage (.418) and fielding percentage (1.000).

SIGNATURE STEALS: The Blue Raiders stole four bases over the weekend in an effort to surpass last season's record-breaking total of 111. The 2007 team ranked 12th nationally with 1.85 stolen bases per game. The team's swipes were the third-most in a single-season in school history. Ashley Cline led the Sun Belt with 32 stolen bases, second most in a single season in school history. The Mt. Juliet, Tenn., native was 25th nationally with 0.56 stolen bases per game. The second-year player stole one base this week to make it 46 in her career and cement her spot in sixth place all-time in school history, one behind former Blue Raider Melanie Manley (1997-00). Cline currently leads the 2008 squad with 13 swipes in 17 attempts. She ranks third in the Sun Belt with seven steals in conference play.

POWER PLAYERS: Junior Martha Davis leads the team with five home runs on the season, including a couple three weeks ago in a series sweep of mid-state rival Austin Peay. She is currently occupies fifth place in the career home run list with 12 homeruns. Fellow Blue Raider Whitney Darlington is in eighth place on the all-time home run list. Corrie Abel nailed a game-winning grand slam, the first of her career, in Middle Tennessee's 8-4 win over North Texas earlier this season.

ACES WILD: Sophomore Lindsey Vander Lugt continues to make her mark on the school record books in just her second season. She is currently tied for third place in school history for career wins with former Blue Raider Andrea

Middle Tennessee (17-22, 9-8)
at
Jacksonville State (25-11, 14-3)
UT Martin (16-23, 4-8)

April 15, 2008 - Jacksonville, Ala.
April 16, 2008 - Martin, Tenn.

History: Middle Tennessee and Jacksonville State are meeting for the seventh time in school history, while the Blue Raiders are meeting UT Martin for the 33rd time.

2008 SCHEDULE/RESULTS

DATE	OPPONENT	TIME/RESULTS
E. 8	vs Georgetown	W, 2-1
E. 8	vs Ole Miss	L, 4-0
E. 9	vs Tennessee Tech	L, 8-2
E. 9	at Kennesaw State	L, 7-1
E. 15	%vs. #27 Georgia Tech	L, 2-1
E. 15	%at #2 Alabama	L, 6-0
E. 16	%vs. New Mexico	L, 7-5
E. 16	%at #2 Alabama	L, 7-1
E. 17	% vs. New Mexico	Cancelled
F. 23	^UT Martin	W, 5-1
F. 23	^Belmont	W, 12-1
F. 24	^#29 Southern Illinois	W, 6-0
F. 24	UT Martin	L, 4-2
F. 28	Lipscomb (DH)	W, 3-2, L, 4-3
M. 4	*at Troy (DH)	W, 4-1, W, 11-0
M. 5	*at Troy	L, 4-0
M. 7	&vs Western Michigan	Cancelled
M. 7	&vs Furman	Cancelled
M. 8	&vs Florida A&M	Cancelled
M. 8	&vs Jacksonville State	Cancelled
M. 13	Evansville (DH)	L, 8-3, L, 5-3
M. 16	*#17 La.-Lafayette (DH)	L, 8-1, L, 12-1
M. 21	*at South Alabama (DH)	L, 2-0, L, 9-1
M. 22	*at South Alabama	W, 5-2
M. 26	Austin Peay (DH)	W, 8-2, W, 11-3
M. 29	*Louisiana-Monroe (DH)	W, 2-1, L, 5-4
M. 30	*Louisiana-Monroe	W, 11-3
A. 3	Tennessee State (DH)	Cancelled
A. 5	*at North Texas (DH)	W, 8-4, L, 13-4
A. 6	*at North Texas	W, 4-3
A. 9	at Southeast Missouri (DH)	L, 6-4, W, 5-3
A. 10	at Chattanooga (DH)	L, 7-3, L, 7-2
A. 12	*Florida International (DH)	W, 4-0, W, 3-1
A. 13	*Florida International	L, 6-5
A. 15	at Jacksonville State (DH)	2/4 PM
A. 16	at UT Martin (DH)	3/5 PM
A. 23	at Tennessee Tech (DH)	4/6 PM
A. 26	*at Florida Atlantic (DH)	5/7 PM
A. 27	*at Florida Atlantic	Noon
M. 2	*Western Kentucky (DH)	3/5 PM
M. 3	*Western Kentucky	1 PM
M. 8-11	Sun Belt Tournament	TBA
!	- Kennesaw State Classic	
%	- Crimson Classic	
^	- Middle Tennessee Classic	
&	- Buzz Classic	
*	- Sun Belt Conference Game	

2008 PRESEASON ALL-SUN BELT CONFERENCE

P: Brittany Cueveas (Louisiana-Lafayette, Sr.)
 P: Jennifer Kempf (Western Kentucky, Jr.)
 C: Rachele Boucher (Western Kentucky, So.)
 1B: Jessica Lyle (Troy, Sr.)
 2B: Jenny Stevens (South Alabama, So.)
 SS: Katya Muller (North Texas, Sr.)
 3B: Rebecca Horesky (Western Kentucky, Jr.)
 OF: Kim Rodriguez (Florida International, Jr.)
 OF: Karli Hubbard (Louisiana-Lafayette, Jr.)
 OF: Evelyne Pare (South Alabama, Sr.)
 OF: Heidi Johnson (Troy, Jr.)
 DP: Holly Tankersley (Louisiana-Lafayette, Sr.)

PRESEASON PLAYER OF THE YEAR
 Holly Tankersley (Louisiana-Lafayette, Sr., DP)

PRESEASON PITCHER OF THE YEAR
 Jennifer Kempf (Western Kentucky, Jr., P)

SUN BELT PLAYER OF THE WEEK
 -April 7, 2008 - April 13, 2008-
 OF: Holly Tankersley (Louisiana-Lafayette, Sr.)

SUN BELT PITCHER OF THE WEEK
 -April 7, 2008 - April 13, 2008-
 P: Donna Bourgeois (Louisiana-Lafayette, Fr.)

Sun Belt Standings April 14, 2008

Team	Sun Belt	Overall
Louisiana-Lafayette	9-2 .818	31-10 .756
Florida Atlantic	10-3 .769	28-19 .596
Troy	12-6 .667	27-18 .600
Middle Tennessee	9-8 .529	17-22 .436
Florida International	7-8 .467	23-29 .442
Louisiana-Monroe	7-8 .467	15-26 .366
North Texas	8-10 .444	22-26 .458
South Alabama	4-11 .267	18-24 .429
Western Kentucky	2-12 .143	14-25 .359



Edwards (1993-95). She is already ranked in the Top 10 of 19 other pitching records for both a season and a career. Among these include Vander Lugt's school-record 38 starts during the 2007 campaign. She has made 21 starts this season, going 12-13. Earlier this season, the lefty recorded the fourth longest streak in school history for consecutive innings without a walk. Her 24.3 inning mark over five games from February 23-28 puts her just shy of Jennifer Martinez's (1999-02) 27.0 innings the top spot. The Sophomore is currently tops in the Sun Belt Conference with a 1.49 ERA in conference play.

DECISIVE DEFENSE: Blue Raiders have continued their stellar defensive play from the 2007 season in which they ranked 29th nationally with 0.38 double plays per game and 100th nationally with a .961 fielding percentage. Whitney Padgett currently leads the squad with 104 assists.

BATTING AROUND: Senior Whitney Darlington (.311, 10th) and Sophomore Corrie Abel (.357, 8th) both came into this season ranked on the career batting average charts. Abel ranks eighth in the Sun Belt Conference with a .366 batting average in 123 appearances at the plate.

THE WEATHER EFFECT: The Blue Raiders have had 12 games cancelled or postponed this season due to inclement weather. The squad lost one game in the Crimson Classic and their entire schedule in the Buzz Classic. They had one conference game cancelled against #17 Louisiana-Lafayette because of rain. It will not be rescheduled. MT's doubleheader on April 3rd against local rivals Tennessee State, originally scheduled for March 19 but postponed due to poor weather conditions, was delayed for a second time due to inclement weather. A make-up date has yet to be determined.

NEVAR'S NEWEST: Thus far in 2008, Head Coach Sue Nevar has played just three teams she previously matched up against during her 11 year coaching career. The Blue Raiders defeated the Southern Illinois Salukis 6-0 and took two of three from SBC foe Louisiana-Monroe before dropping a doubleheader against Chattanooga to improve her record against those teams to 5-4.

DEFEATING RANKED FOES: The Blue Raiders have played six games against teams receiving votes in the USA Today/NFCA Poll, going 1-5. Their sole win came against the Southern Illinois Salukis at the Middle Tennessee Classic earlier this season. The Blue Raiders went 2-4 against ranked opponents in 2007, with each loss coming by four runs or less.

QUICK FACTS

Location	Murfreesboro, Tenn.	Record at MT/Year	17-22/1st year
Founded	1911	Career Record	306-313-1/11
Enrollment	22,264	Assistant Coach	Lisa Allen
Nickname	Blue Raiders	Graduate Assistant	Krista Barts
Colors	Royal Blue & White	2007 Record	30-30/6-9 SBC
Mascot	Lightning	MT Overall Record	389-379-1
Conference	Sun Belt	Secretary	Debbie Bartlett
Affiliation	NCAA Division I	Media Relations Director	Mark Owens
Field	Blue Raider Softball Field	Media Relations Contact	David Powell
President	Dr. Sidney A. McPhee	Athletic Trainer	Kristin Midkiff
Faculty Representative	Terry Whiteside	Manager	Phillip Elliot
Director of Athletics	Chris Massaro	Athletics Phone	(615) 904-2450
Head Coach	Sue Nevar		

Statistics Corner

When MT scores...

0 Runs	0-4
1 Run	0-6
2 Runs	2-3
3 Runs	2-4
4 Runs	3-3
5 Runs	3-2
6 Runs	1-0
7 Runs	0-0
8 Runs	2-0
9 Runs	0-0
10+ Runs	4-0

When opponents score...

0 Runs	3-0
1 Run	6-0
2 Runs	3-2
3 Runs	4-0
4 Runs	1-4
5 Runs	0-2
6 Runs	0-3
7 Runs	0-5
8 Runs	0-3
9 Runs	0-1
10+ Runs	0-2

When MT gets...

0 Hits	0-0
1-3 Hits	0-6
4-5 Hits	1-5
6-7 Hits	4-3
8-9 Hits	6-2
10+ Hits	5-2

When...

Vander Lugt Starts	11-12
Head Starts	6-10
MT pitcher strikes out 5+	5-5
Opponent pitcher strikes out 5+	4-12
MT Homers	8-7
Opponent Homers	1-12
MT has 0 Errors	5-3
MT has 1+ Errors	12-19

Opponent has 0 Errors	3-9
Opponent has 1+ Errors	14-13

In one-run games	4-4
In extra-inning games	0-1

MT out-hits opponent	11-2
MT gets out-hit by opponent	3-19
Hits are tied	3-1

2008 ROSTER

Numerical

No.	Name	Pos.	Ht.	Cl.-Exp.	B-T	Hometown/High School (Last School)
_00	Ashley Cline	UT	5-5	SR-1L	L-R	Gallatin, Tenn./Gallatin HS (Univ. of Tennessee)
1	Martha Davis	OF	5-4	JR-2L	R-R	Signal Mountain, Tenn./Red Bank HS
2	Kandra Singleton	UT	5-0	FR-HS	R-R	Clarksville, Tenn./Northwest H
4	Whitney Darlington	UT	5-7	SR-1L	R-R	Tullahoma, Tenn./Tullahoma HS (Motlow State CC)
5	Katie Mielke	C/UT	5-8	SR-2L	R-R	Lombard, Ill./Glenbard East HS (Illinois State Univ.)
6	Corrie Abel	OF	5-5	SO-1L	L-L	Shorewood, Ill./Joliet West HS
7	Kelsey Dortch	OF	5-11	FR-HS	R-L	Milan, Tenn./Milan HS
8	Caitlin McLure	OF	5-4	SO-1L	L-R	Anaheim, Calif./Troy H
11	Brittney Banania	IF	5-5	FR-HS	L-R	San Pedro, Calif./San Pedro HS
12	Kellie Head	P	5-7	FR-HS	R-R	Paris, Texas/Paris HS
13	Justine Cerda	UT	5-5	JR-2L	R-R	Grants Pass, Ore./Grants Pass HS
14	Jessica Ives	C/1B	5-9	SO-1L	R-R	Chattanooga, Tenn./Boyd-Buchanan HS
16	Amy Candioto	P	6-0	SR-1L	R-R	Portland, Ore./Milwaukee HS (Central Michigan Univ.)
19	Whitney Padgett	IF	5-4	JR-JC	R-R	Chatsworth, Ga./Murray County HS (Motlow State CC)
21	Lindsey Vander Lugt	P	5-10	SO-1L	L-L	Olympia, Wash./Tumwater HS

Alphabetical

No.	Name	Pos.	Ht.	Cl.-Exp.	B-T	Hometown/High School (Last School)
6	Corrie Abel	OF	5-5	SO-1L	L-L	Shorewood, Ill./Joliet West HS
11	Brittney Banania	IF	5-5	FR-HS	L-R	San Pedro, Calif./San Pedro HS
16	Amy Candioto	P	6-0	SR-1L	R-R	Portland, Ore./Milwaukee HS (Central Michigan Univ.)
13	Justine Cerda	UT	5-5	JR-2L	R-R	Grants Pass, Ore./Grants Pass HS
00	Ashley Cline	UT	5-5	SR-1L	L-R	Gallatin, Tenn./Gallatin HS (Univ. of Tennessee)
4	Whitney Darlington	UT	5-7	SR-1L	R-R	Tullahoma, Tenn./Tullahoma HS (Motlow State CC)
1	Martha Davis	OF	5-4	JR-2L	R-R	Signal Mountain, Tenn./Red Bank HS
7	Kelsey Dortch	OF	5-11	FR-HS	R-L	Milan, Tenn./Milan HS
12	Kellie Head	P	5-7	FR-HS	R-R	Paris, Texas/Paris HS
14	Jessica Ives	C/1B	5-9	SO-1L	R-R	Chattanooga, Tenn./Boyd-Buchanan HS
8	Caitlin McLure	OF	5-4	SO-1L	L-R	Anaheim, Calif./Troy HS
5	Katie Mielke	C/UT	5-8	SR-2L	R-R	Lombard, Ill./Glenbard East HS (Illinois State Univ.)
15	Whitney Padgett	IF	5-4	JR-JC	R-R	Chatsworth, Ga./Murray County HS (Motlow State CC)
2	Kandra Singleton	UT	5-0	FR-HS	R-R	Clarksville, Tenn./Northwest HS
21	Lindsey Vander Lugt	P	5-10	SO-1L	L-L	Olympia, Wash./Tumwater HS

Head Coach: Sue Nevar (Indiana, 1981)

Assistant Coach: Lisa Allen (Oregon State, 2006)

Graduate Assistant: Krista Barts (Auburn, 2007)

Athletic Trainer: Kristin Midkiff

Manager: Phillip Elliot

Pronunciation Guide

Corrie Abel	AA-bull
Brittney Banania	buh-NON-yuh
Amy Candioto	CAN-dee-oh-toe
Justine Cerda	SIR-duh
Kelsey Dortch	DOORCH
Jessica Ives	EYEVS (like knives)
Caitlin McLure	KATE-lynn MC-Lure
Katie Mielke	MILK-ee
Sue Nevar	KNEE-var (like far)
Whitney Padgett	PADG-et
Kandra Singleton	CAN-druh
Lindsey Vander Lugt	VAN-der -luckt

2008 ROSTER



00

Ashley Cline
5-5, UT, SR, R-R
Gallatin, Tenn./
Univ. of Tennessee



1

Martha Davis
5-4, OF, JR, R-R
Signal Mountain, Tenn./
Red Bank HS



2

Kandra Singleton
5-0, UT, FR, R-R
Clarksville, Tenn./
Northwest HS



4

Whitney Darlington
5-7, UT, SR, R-R
Tullahoma, Tenn./
Motlow State CC



5

Katie Mielke
5-8, C/UT, SR, R-R
Lombard, Ill./
Illinois State Univ.



6

Corrie Abel
5-5, OF, SO, L-L
Shorewood, Ill./
Joliet West HS



7

Kelsey Dortch
5-11, OF, FR, R-L
Milan, Tenn./
Milan HS



8

Caitlin McLure
5-4, OF, So, L-L
Anaheim, Calif./
Troy HS



11

Brittney Banania
5-5, IF, FR, L-R
San Pedro, Calif./
San Pedro HS



12

Kellie Head
5-7, P, FR, R-R
Paris, Texas/
Paris HS



13

Justine Cerda
5-5, UT, JR, R-R
Grants Pass, Ore./
Grants Pass HS



14

Jessica Ives
5-9, C/1B, SO, R-R
Chattanooga, Tenn./
Boyd-Buchanan HS



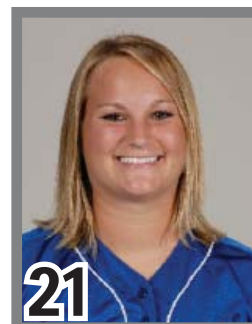
15

Whitney Padgett
5-4, IF, JR, R-R
Chatsworth, Ga./
Motlow State CC



16

Amy Candioto
6-0, P, SR, R-R
Portland, Ore./
Central Michigan Univ.



21

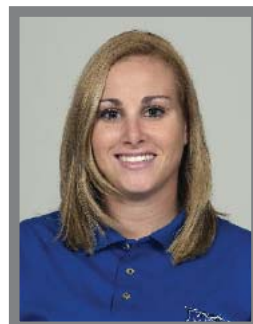
Lindsey Vander Lugt
5-10, P, SO, L-L
Olympia, Wash./
Tumwater HS



Head Coach
Sue Nevar



Assistant Coach
Lisa Allen



Graduate Assistant
Krista Barts

2008 Middle Tennessee Softball
 Overall Statistics for Middle Tennessee (as of Apr 13, 2008)
 (All games Sorted by Batting avg)

Record: 17-22 Home: 10-8 Away: 6-9 Neutral: 1-5 Sun Belt: 9-8

Player	AVG	GP-GS	AB	R	H	2B	3B	HR	RBI	TB	SLG%	BB	HBP	SO	GDP	OB%	SF	SH	SB-ATT	PO	A	E	FLD%
6 Abel, Corrie.....	.366	39-39	123	24	45	5	2	3	18	63	.512	10	1	13	0	.418	0	0	5-5	57	7	0	1.000
0 Cline, Ashley....	.336	39-39	128	18	43	5	2	0	15	52	.406	5	2	13	0	.368	1	4	13-17	82	86	15	.918
5 Mielke, Katie....	.277	33-33	94	18	26	5	1	3	12	42	.447	14	1	24	0	.376	0	3	9-10	107	32	2	.986
13 Cerda, Justine...	.262	38-37	107	6	28	2	1	1	18	35	.327	5	0	19	2	.289	2	0	0-2	167	12	2	.989
1 Davis, Martha....	.252	39-39	111	12	28	5	0	5	20	48	.432	12	1	20	0	.328	1	4	1-2	36	0	3	.923
11 Banania, Brittney	.250	37-37	104	16	26	5	0	0	5	31	.298	8	2	16	0	.316	0	4	1-1	70	90	7	.958
4 Darlington, Whitn	.232	38-34	95	14	22	3	3	0	9	31	.326	12	2	13	0	.330	0	5	0-0	144	11	1	.994
8 McLure, Caitlin..	.218	39-39	101	19	22	3	2	0	5	29	.287	18	1	20	0	.342	0	5	8-10	44	4	1	.980
19 Padgett, Whitney	.189	38-38	106	9	20	4	1	3	16	35	.330	11	0	26	1	.261	2	1	0-0	33	104	18	.884

14 Ives, Jessica....	.184	20-14	38	3	7	0	0	3	8	16	.421	6	1	14	1	.311	0	0	0-1	20	4	0	1.000
7 Dortch, Kelsey...	.000	18-1	3	3	0	0	0	0	0	0	.000	1	0	2	0	.250	0	0	1-3	0	0	1	.000
2 Singleton, Kandra	.000	20-1	1	8	0	0	0	0	0	0	.000	0	0	1	0	.000	0	0	1-3	0	0	0	.000
12 Head, Kellie.....	.000	18-16	0	0	0	0	0	0	0	0	.000	0	0	0	0	.000	0	0	0-0	1	13	2	.875
21 Vander Lugt, Lind	.000	29-23	0	0	0	0	0	0	0	0	.000	0	0	0	0	.000	0	0	0-0	5	41	8	.852
Totals.....	.264	39-39	1011	150	267	37	12	18	126	382	.378	102	11	181	4	.336	6	26	39-54	766	404	60	.951
Opponents.....	.313	39-39	1072	169	336	62	8	20	155	474	.442	45	5	105	3	.342	8	28	32-45	771	317	59	.949

LOB - Team (239), Opp (225). DPs turned - Team (13), Opp (10). CI - Team (0), Opp (2). Picked off - Davis 2, Cline 1.

(All games Sorted by Earned run avg)

Player	ERA	W-L	APP	GS	CG	SHO/CBO	SV	IP	H	R	ER	BB	SO	2B	3B	HR	AB	B/Avg	WP	HBP	BK	SFA	SHA
21 Vander Lugt, Lind	2.31	12-13	29	23	21	2/1	1	175.2	202	85	58	19	92	40	6	4	708	.285	0	2	1	3	21
12 Head, Kellie.....	5.36	5-9	18	16	10	0/1	0	79.2	134	84	61	26	13	22	2	16	364	.368	6	3	5	5	7
Totals.....	3.26	17-22	39	39	31	3/1	1	255.1	336	169	119	45	105	62	8	20	1072	.313	6	5	6	8	28
Opponents.....	2.94	22-17	39	39	18	4/1	3	257.0	267	150	108	102	181	37	12	18	1011	.264	20	11	2	6	26

PB - Team (4), Mielke 2, Ives 2, Opp (7). Pickoffs - Team (6), Mielke 5, Ives 1, Opp (3). SBA/ATT - Mielke (23-35), Vander Lugt (20-29), Head (12-16), Ives (9-10).

2008 Middle Tennessee Softball
Overall Statistics for Middle Tennessee (as of Apr 13, 2008)
(All games Sorted by Fielding pct)

Player	C	PO	A	E	FLD%	DPs	SBA	CSB	SBA%	PB	CI
6 Abel, Corrie.....	64	57	7	0	1.000	0	0	0	---	0	0
14 Ives, Jessica....	24	20	4	0	1.000	0	9	1	.900	2	0
4 Darlington, Whitn	156	144	11	1	.994	5	0	0	---	0	0
13 Cerda, Justine...	181	167	12	2	.989	2	0	0	---	0	0
5 Mielke, Katie....	141	107	32	2	.986	3	23	12	.657	2	0
8 McLure, Caitlin..	49	44	4	1	.980	0	0	0	---	0	0
11 Banania, Brittney	167	70	90	7	.958	2	0	0	---	0	0
1 Davis, Martha....	39	36	0	3	.923	1	0	0	---	0	0
0 Cline, Ashley....	183	82	86	15	.918	6	0	0	---	0	0
19 Padgett, Whitney	155	33	104	18	.884	6	0	0	---	0	0
12 Head, Kellie.....	16	1	13	2	.875	0	12	4	.750	0	0
21 Vander Lugt, Lind	54	5	41	8	.852	0	20	9	.690	0	0
7 Dortch, Kelsey...	1	0	0	1	.000	0	0	0	---	0	0
2 Singleton, Kandra	0	0	0	0	.000	0	0	0	---	0	0
Totals.....	1230	766	404	60	.951	13	32	13	.711	4	0
Opponents.....	1147	771	317	59	.949	10	39	15	.722	7	2

Hitting minimums - 1 Games 1.2 AB/Game
Pitching minimums - 1 Games 1.0 IP/Game