

February 27, 2010

## Women's tennis drops first match of the season

### Blue Raiders win doubles point

Athletic Communications

## RELATED CONTENT

- [Cumulative Stats](#)
- [Box Score](#)

**NASHVILLE, Tenn.** - The No. 75-ranked Middle Tennessee women's tennis team fell 5-1 Saturday to visiting Marshall, ranked No. 34 in the latest Campbell's/Intercollegiate Tennis Association poll, at the Nashboro Village Indoor Courts in Nashville, Tenn.

The Blue Raiders captured the doubles point by winning two of the three contests but could not muster a victory in singles action in losing their first of six matches this season.

Middle Tennessee (5-1) earned its first doubles win at No. 2, as [Carla Nava](#) and [Yuiiri Nomoto](#) combined for an 8-2 triumph over the Thundering Herd's Kara Kucin and Isabell Raich.

The point would be decided during the No. 3 match and the see-saw affair would land in the Blue Raiders' favor after going to a tiebreaker. [Anna Djananova](#) and [Taylor Coffey](#) knocked off Deanna Bailey and Thaddea Lock 9-8 (8-6) to clinch the point.

"Our girls fought their tails off for the doubles point and we beat them," head coach Alison Ojeda said. "I thought going in that if we would win the doubles point, we could win the match, and unfortunately it did not turn out that way."

Singles action saw Marshall (11-0) earn victories in all five matches which were finished, as it sealed the win.

At the No. 2 spot, [Natalie Araya](#) went to a tiebreaker against Dominika Zaprazna before falling 6-2, 7-6 (8-6). The other four matchups were decided in straight sets.

Coffey's singles match at No. 6 versus Kristina Koprcina did not finish with the Thundering Herd sophomore ahead 7-6 in the first set.

Marshall's squad featured nationally-ranked foes, including Michaela Kissell at No. 42 in singles playing at the No. 1 position. Kissell and Zaprazna paired to form the top doubles tandem and entered the match ranked No. 23.

"We believe in each other, so doubles is always possible. We do not yet believe in ourselves individually to win singles matches.

"Give credit to Marshall, though, as they are a very good team. I would not be surprised if they go on to finish in the Top 15 or 20 in the country at the end of the season."

The Blue Raiders will look to regroup when they travel to Oxford, Miss., Sunday to face No. 26 Mississippi at 1 p.m.

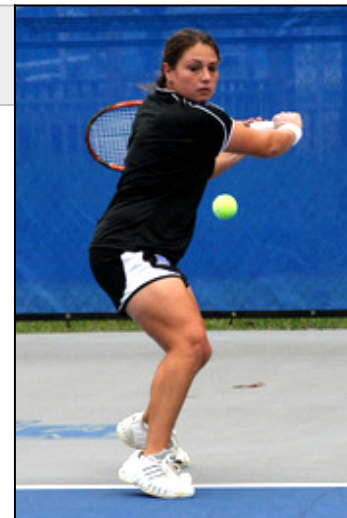
#### #34 Marshall 5, #75 Middle Tennessee 1

##### Singles

- No. 1 #42 Michaela Kissell (MARS) def. [Carla Nava](#) (MT) 6-0, 6-0
- No. 2 Dominika Zaprazna (MARS) def. [Natalie Araya](#) (MT) 6-2, 7-6 (8-6)
- No. 3 Isabell Raich (MARS) def. [Yuiiri Nomoto](#) (MT) 6-2, 6-2
- No. 4 Catherine Kellner (MARS) def. [Anna Djananova](#) (MT) 6-2, 6-2
- No. 5 Deanna Bailey (MARS) def. [Marietta Bigus](#) (MT) 6-2, 6-2
- No. 6 [Taylor Coffey](#) (MT) vs. Kristina Koprcina (MARS) 6-7, unfinished

##### Doubles

- No. 1 #23 Michaela Kissell/Dominika Zaprazna (MARS) def. [Natalie Araya/Marietta Bigus](#) (MT) 8-2
- No. 2 [Carla Nava/Yuiiri Nomoto](#) (MT) def. Kara Kucin/Isabell Raich (MARS) 8-2
- No. 3 [Taylor Coffey/Anna Djananova](#) (MT) def. Deanna Bailey/Thaddea Lock (MARS) 9-8 (8-6)



Senior Anna Djananova combined with sophomore Taylor Coffey to win the No. 3 doubles match and clinch the point for the Blue Raiders. (MT Athletic Communications)

*Printed on May 23, 2012*

*Original URL: <http://www.goblueraiders.com/content.cfm/id/44227>*